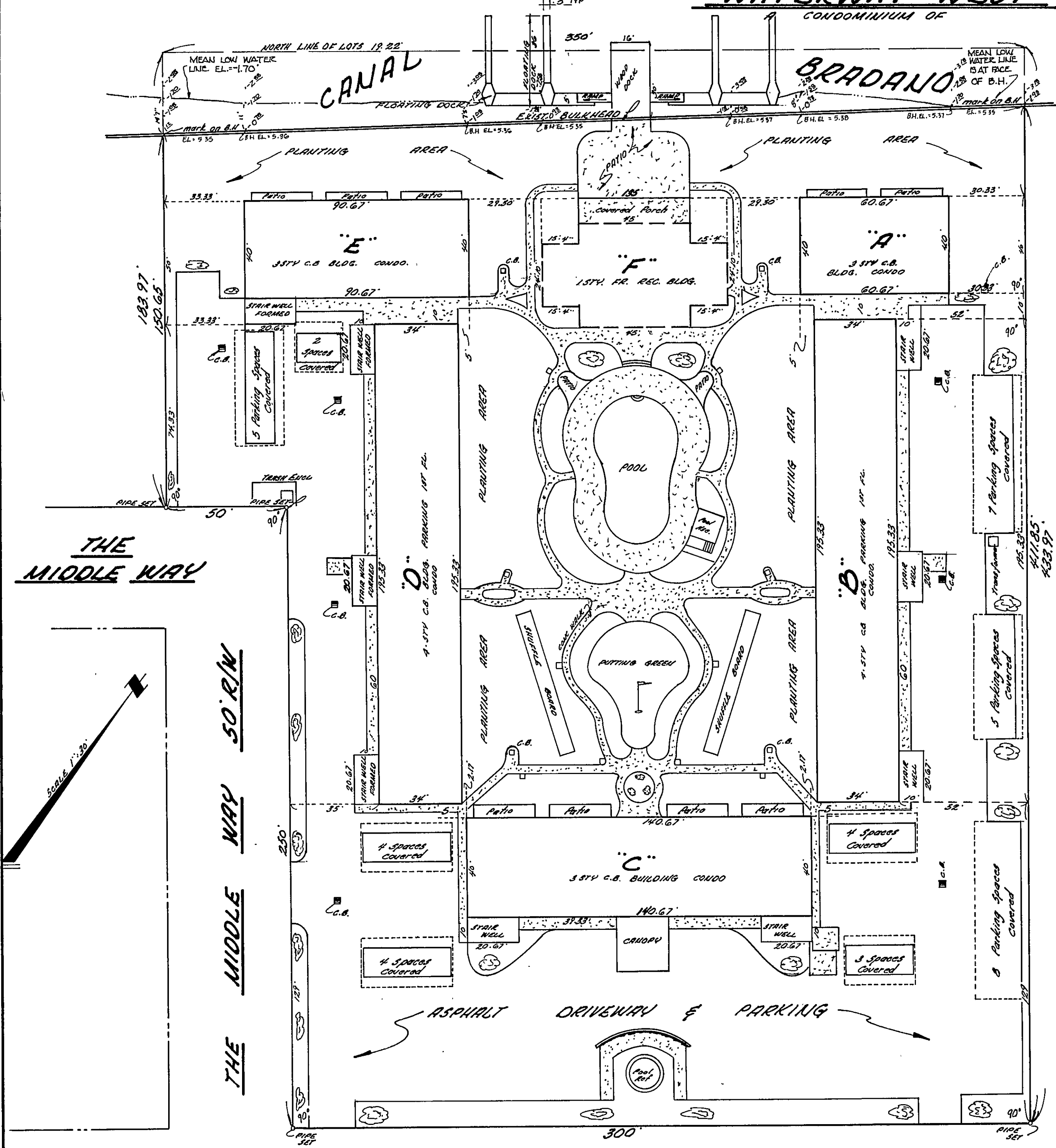


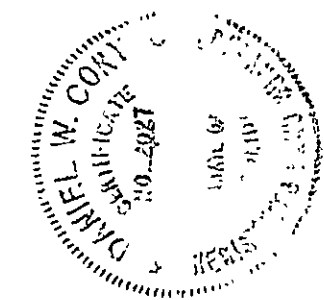
PLAT OF COMPLETION SURVEY OF WATERWAY WEST



THE WEST ONE-HALF OF LOT 19 AND LOTS 20, 21 AND 22 VENEZIA UNIT NO. 1 AS SHOWN ON MAP IN MAP BOOK 23, PAGE 212 OF THE PUBLIC RECORDS OF VOLUSIA COUNTY, FLA

THE UNDERSIGNED BEING A LICENSED AND REGISTERED LAND SURVEYOR OF THE STATE OF FLORIDA, DOES HEREBY CERTIFY THAT A SURVEY WAS MADE OF THE LANDS AS SHOWN HEREON, AND FURTHER CERTIFY THAT THIS PLOT PLAN DESIGNATED AS EXHIBIT "E" CONSISTING OF SHEETS THROUGH _____ INCLUSIVE, TOGETHER WITH THE DECLARATION AS RECORDED IN OFFICIAL RECORDS BOOK #1674, PAGE #378, PUBLIC RECORDS OF VOLUSIA COUNTY, FLORIDA, IS A CORRECT REPRESENTATION OF THE IMPROVEMENTS DESCRIBED, AND THAT IT CAN BE DETERMINED THEREFROM THE IDENTIFICATION, LOCATIONS AND DIMENSIONS OF THE COMMON ELEMENTS AND OF EACH UNIT CONTAINED THEREIN.

SIGNED Daniel W. Cory DATE June 22, 1975
 DANIEL W. CORY
 FLA. REG. SURVEYOR # 2027



June 17, 1986 -- Added to plat the approximate mean low water line lying Northwesterly of the West 1/2 of Lot 19 and Lots 20, 21 and 22, Venezia Unit No. 1, as shown on map in Map Book 23, page 212, Public Records Volusia County, Florida.

- SURVEYOR'S NOTES:**
1. Mean low water line elevation established from Corp of Engineers sheet 12 of 16, drawing 8A-17899.
 2. Elevations refer to NGVD and based on SRD Monument No. 2 having and elevation of 7.90 feet.

I HEREBY CERTIFY THAT THIS PLAT IS A TRUE AND CORRECT REPRESENTATION OF THE LAND SURVEYED.

Daniel W. Cory
 JUNE, 1973 DANIEL W. CORY

SURVEYOR'S NOTES
 3-29-74 - BLDG. A-B-C-D-AND E - CONC. BLK 1-STY

EXHIBIT "E"

REVISED 1-7-75 FINAL LOCATION
 PREPARED BY
DANIEL W. CORY
 FLA. REG. SURVEYOR 2027
 300 CANAL ST.
 NEW SMYRNA BEACH, FLA.